



## BLACKPOOL VICTORIA HOSPITAL EMERGENCY DEPARTMENT

### MONTHLY BULLETIN: APRIL 2013 TO MARCH 2014

This bulletin provides a breakdown of all attendances<sup>1</sup> to Blackpool Victoria Hospital Emergency Department (ED) between April 2013 and March 2014.

In the twelve month period there were 82,457 attendances to Blackpool Victoria Hospital ED. July 2013 had the highest number of attendances (n=7,520) compared to February 2014, the month with the fewest (n=6,227) (**Figure 1**).

There were fractionally more males than females attending the ED in 2013/14 (males=41,730; 51%) (**Figure 1**). A third (33%) were aged 60 years or more (n=27,050), followed by over three in ten (32%) aged between 30 and 59 years (n=26,179) and one-fifth (20%) aged between 15 and 29 years (**Figure 2**).

**Table 1** shows the patient group of attendances between April 2013 and March 2014. The majority (92%) of attendances were categorised as 'other' injury (including medical and 'other' injury attendances) (n=75,960). Overdose and poisoning (n=2,017), sports injury (n=1,777) and assault (n=1,311) each accounted for 2% of attendances.

The referral source to the ED is detailed in **Table 2**. Forty-four per cent of attendees were referred by the emergency services (n=36,027) and just under two in five (39%) self-referred (n=32,216). Furthermore, one in ten (10%) were referred by a health care provider (n=8,233).

<sup>1</sup> For other hospitals TIIG reports on injuries only, however, this report includes all attendances to Blackpool Victoria Hospital. This is due to medical and other injury attendances being categorised within the 'other' injury group.

**Table 3** illustrates the incident location. The primary location was the home (n=53,937; 65%) and 16% occurred in a public place (n=13,053).

The discharge destination for ED attendances is displayed in **Table 4**. Under three-fifths (56%) of attendees were discharged with no follow-up treatment required (n=46,152), while a quarter (25%) were admitted to hospital (n=20,811) and one in ten (10%) referred for further treatment (n=8,176).

#### ASSAULT ATTENDANCES

Between April 2013 and March 2014 there were 1,311 assault attendances to Blackpool Victoria Hospital ED. The month with the highest number was July 2013 with 133 assault attendances (**Figure 3**).

There were substantially more males than females presenting at the ED with assault-related injuries (males=959; 73%) (**Figure 3**). Over half (53%) were aged between 15 and 29 years (n=701) and two in five (40%) were aged between 30 and 59 years (n=518) (**Table 5**).

The assault location is shown in **Table 6**. Under three in five (57%) occurred in a public place (n=749) and under a quarter (23%) occurred in the home (n=308).

**Table 7** illustrates the disposal method of assault attendances in 2013/14. Seven in ten (70%) were discharged from hospital with no follow-up treatment required (n=921) compared to 12% who required follow-up treatment (n=157).

Figure 1: ED attendances by gender and month, April 2013 to March 2014

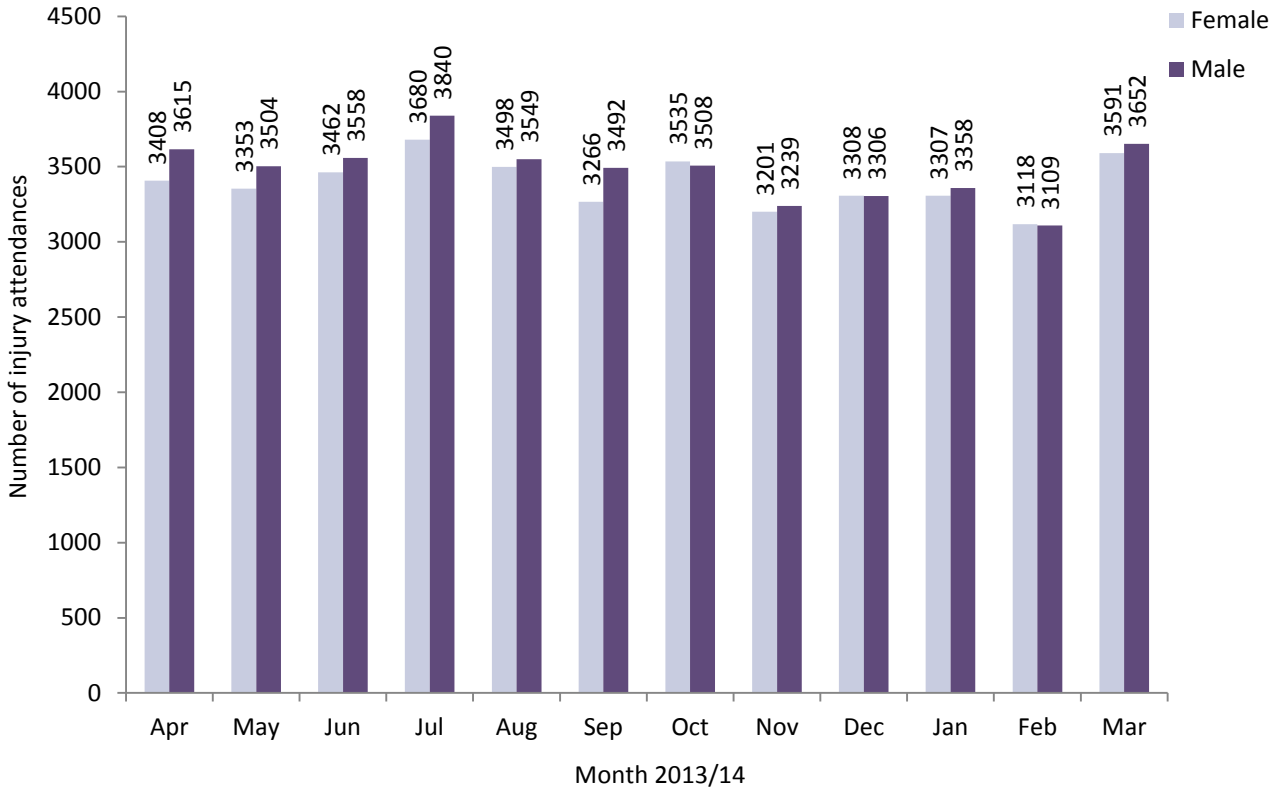
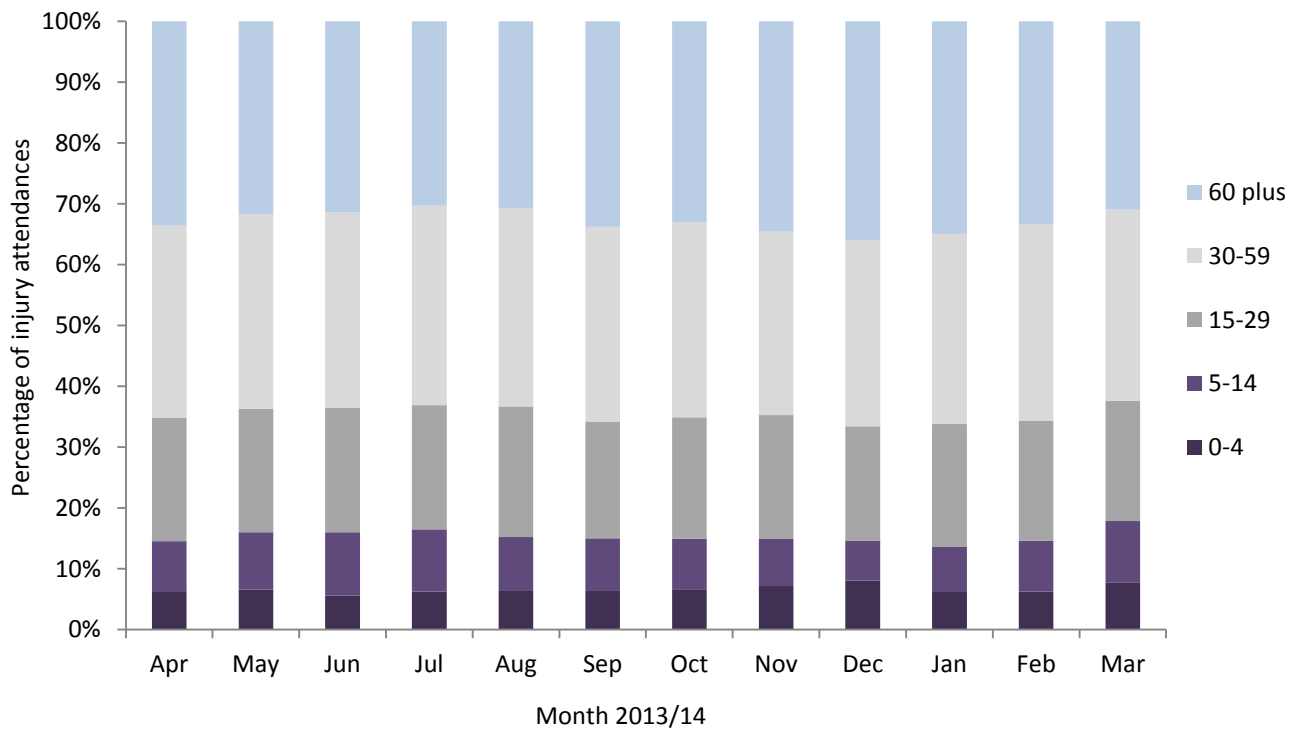


Figure 2: ED attendances by age group and month, April 2013 to March 2014<sup>^</sup>



<sup>^</sup> There were seven records where the age was unknown; these have been omitted from the chart.

**Table 1: ED attendances by patient group and month, April 2013 to March 2014<sup>†2</sup>**

Patient group	Apr	May	Jun	Jul	Aug	Sep	Oct	Nov	Dec	Jan	Feb	Mar	Total	%
Other injury	6462	6299	6473	6907	6506	6190	6414	5945	6178	6171	5738	6677	75960	92%
Overdose and poisoning	133	169	161	213	170	150	189	131	168	175	173	185	2017	2%
Sports injury	221	174	147	134	123	168	160	151	81	121	130	167	1777	2%
Assault	100	101	124	133	132	109	131	103	95	90	92	101	1311	2%
Road traffic accident	87	90	90	107	92	110	118	87	69	83	68	92	1093	1%
Deliberate self-harm	20	24	25	26	24	31	31	23	23	25	26	21	299	0%
<b>Total</b>	<b>7023</b>	<b>6857</b>	<b>7020</b>	<b>7520</b>	<b>7047</b>	<b>6758</b>	<b>7043</b>	<b>6440</b>	<b>6614</b>	<b>6665</b>	<b>6227</b>	<b>7243</b>	<b>82457</b>	<b>100%</b>

<sup>†</sup> Due to low numbers, firework injuries have been included in the 'other' injury category (n=19).

**Table 2: ED attendances by referral source and month, April 2013 to March 2014<sup>3</sup>**

Referral source	Apr	May	Jun	Jul	Aug	Sep	Oct	Nov	Dec	Jan	Feb	Mar	Total	%
Emergency services	3033	2931	2986	3125	2962	2915	3131	2900	3110	3052	2799	3083	36027	44%
Self-referral	2772	2857	2808	3102	2853	2728	2599	2407	2413	2445	2329	2903	32216	39%
Health care provider	679	658	747	744	728	671	717	585	681	642	603	778	8233	10%
General medical practitioner	269	176	173	233	218	198	275	252	174	250	221	179	2618	3%
Other	103	94	127	132	116	124	154	145	127	150	131	143	1546	2%
Police/prison service/court	55	33	46	69	64	36	40	54	43	32	28	47	547	1%
Work	46	39	57	45	54	32	47	41	18	35	46	45	505	1%
Accident and emergency	35	33	39	45	<50	36	35	23	<30	22	27	25	395	0%
Educational establishment	<35	<35	37	<25	0	18	45	<35	21	<40	41	<40	354	0%
General dental practitioner	***	***	0	***	***	0	0	***	0	***	***	0	<15	0%
Local authority social services	0	0	0	0	0	0	0	0	***	0	***	***	***	0%
<b>Total</b>	<b>7023</b>	<b>6857</b>	<b>7020</b>	<b>7520</b>	<b>7047</b>	<b>6758</b>	<b>7043</b>	<b>6440</b>	<b>6614</b>	<b>6665</b>	<b>6227</b>	<b>7243</b>	<b>82457</b>	<b>100%</b>

**Table 3: ED attendances by incident location and month, April 2013 to March 2014<sup>\*3</sup>**

Incident location	Apr	May	Jun	Jul	Aug	Sep	Oct	Nov	Dec	Jan	Feb	Mar	Total	%
Home	4556	4262	4452	4685	4449	4182	4607	4323	4680	4747	4247	4747	53937	65%
Public place	1071	1124	1166	1400	1380	1169	1114	1005	899	792	853	1080	13053	16%
Other	1063	1042	974	1008	932	1035	845	692	712	751	717	943	10714	13%
Workplace	214	248	246	277	275	232	271	247	193	207	239	255	2904	4%
Educational establishment	119	179	182	150	11	140	206	173	130	168	171	218	1847	2%
<b>Total</b>	<b>7023</b>	<b>6857</b>	<b>7020</b>	<b>7520</b>	<b>7047</b>	<b>6758</b>	<b>7043</b>	<b>6440</b>	<b>6614</b>	<b>6665</b>	<b>6227</b>	<b>7243</b>	<b>82457</b>	<b>100%</b>

\* There were <5 records where the incident location was unknown; these have been included in the monthly and total figures.

<sup>2</sup> In December 2010, the overdose and poisoning injury group was removed due to a change in the ED's IT system. Since this time, cases have been categorised into one of the other injury groupings (deliberate self-harm, firework injury or other injury). Such cases are, however, identifiable via another data field: presenting complaint. Where the injury group is recorded as 'other' injury and presenting complaint is recorded as 'overdose and poisoning', these records have been categorised in this table as overdose and poisoning. Please note, during this period 19 deliberate self-harm cases also had overdose and poisoning recorded as their presenting complaint.

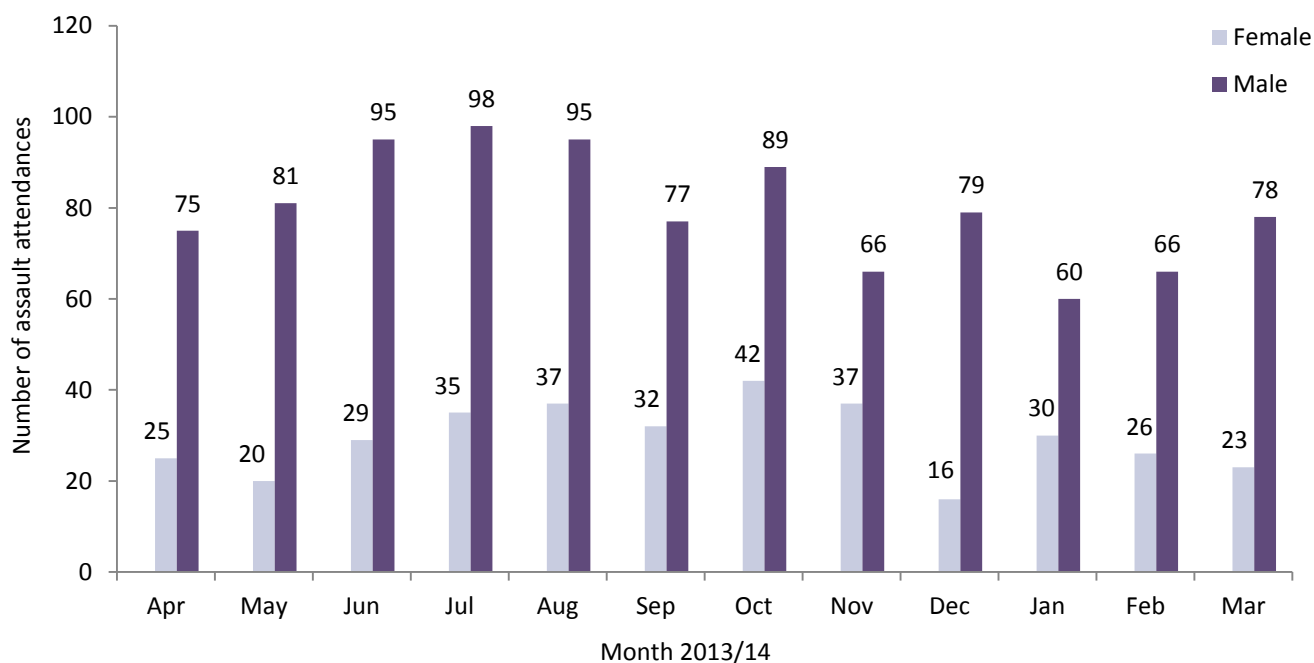
<sup>3</sup> Please note that all numbers less than five have been suppressed (with \*\*\*) in line with patient confidentiality. If there is only one number less than five in a category then two numbers have been suppressed to prevent back calculations from totals.

**Table 4: ED attendances by discharge destination and month, April 2013 to March 2014**

Discharge destination	Apr	May	Jun	Jul	Aug	Sep	Oct	Nov	Dec	Jan	Feb	Mar	Total	%
Discharged	3883	3992	4018	4254	3982	3845	3980	3517	3626	3626	3412	4017	46152	56%
Admitted	1858	1617	1703	1679	1661	1646	1770	1726	1830	1840	1636	1845	20811	25%
Referred	657	751	760	861	772	671	653	606	584	593	596	672	8176	10%
Incomplete treatment	356	290	333	463	372	331	332	291	279	311	351	420	4129	5%
Transferred	188	148	152	185	187	193	200	202	203	198	158	199	2213	3%
Other	57	47	39	62	50	56	81	79	69	75	59	71	745	1%
Died	24	12	15	16	23	16	27	19	23	22	15	19	231	0%
<b>Total</b>	<b>7023</b>	<b>6857</b>	<b>7020</b>	<b>7520</b>	<b>7047</b>	<b>6758</b>	<b>7043</b>	<b>6440</b>	<b>6614</b>	<b>6665</b>	<b>6227</b>	<b>7243</b>	<b>82457</b>	<b>100%</b>

**ASSAULTS**

**Figure 3: ED assault attendances by gender and month, April 2013 to March 2014**



**Table 5: ED assault attendances by age group and month, April 2013 to March 2014<sup>§4</sup>**

Age group	Apr	May	Jun	Jul	Aug	Sep	Oct	Nov	Dec	Jan	Feb	Mar	Total	%
5-14	***	<10	5	<10	<10	<10	***	***	***	6	***	<15	64	5%
15-29	57	51	71	64	74	42	74	56	58	45	55	54	701	53%
30-59	37	38	48	61	49	59	49	43	34	39	31	30	518	40%
60 plus	***	***	0	***	***	***	***	***	***	0	***	***	28	2%
<b>Total</b>	<b>100</b>	<b>101</b>	<b>124</b>	<b>133</b>	<b>132</b>	<b>109</b>	<b>131</b>	<b>103</b>	<b>95</b>	<b>90</b>	<b>92</b>	<b>101</b>	<b>1311</b>	<b>100%</b>

<sup>§</sup> There were no assault attendances in the 0-4 years category.

<sup>4</sup> Please note that all numbers less than five have been suppressed (with \*\*\*) in line with patient confidentiality. If there is only one number less than five in a category then two numbers have been suppressed to prevent back calculations from totals.

**Table 6: ED assault attendances by incident location and month, April 2013 to March 2014<sup>5</sup>**

Incident location	Apr	May	Jun	Jul	Aug	Sep	Oct	Nov	Dec	Jan	Feb	Mar	Total	%
Public place	48	52	62	84	86	57	73	59	59	52	53	64	749	57%
Home	23	23	33	27	27	32	38	27	18	21	24	15	308	23%
Other	21	16	20	15	13	11	12	11	13	11	<15	<15	167	13%
Workplace	<10	<10	<10	7	6	<10	<10	<10	***	***	***	6	63	5%
Educational establishment	***	***	***	0	0	***	***	***	***	***	0	***	24	2%
<b>Total</b>	<b>100</b>	<b>101</b>	<b>124</b>	<b>133</b>	<b>132</b>	<b>109</b>	<b>131</b>	<b>103</b>	<b>95</b>	<b>90</b>	<b>92</b>	<b>101</b>	<b>1311</b>	<b>100%</b>

**Table 7: ED assault attendances by disposal method and month, April 2013 to March 2014<sup>5</sup>**

Disposal method	Apr	May	Jun	Jul	Aug	Sep	Oct	Nov	Dec	Jan	Feb	Mar	Total	%
Discharged	69	63	99	91	96	76	95	70	64	68	59	71	921	70%
Other	10	17	18	22	20	15	19	14	17	12	19	22	205	16%
Follow-up	<20	15	<10	<20	<20	<20	<20	<20	<15	<10	<15	<10	157	12%
Admitted	***	6	***	***	***	***	***	***	***	***	***	***	28	2%
<b>Total</b>	<b>100</b>	<b>101</b>	<b>124</b>	<b>133</b>	<b>132</b>	<b>109</b>	<b>131</b>	<b>103</b>	<b>95</b>	<b>90</b>	<b>92</b>	<b>101</b>	<b>1311</b>	<b>100%</b>

Published May 2014

Karen A Critchley (née Swarbrick) – TIIG Researcher/Analyst

Centre for Public Health, Faculty of Education, Health and Community, Liverpool John Moores University,

2nd Floor, Henry Cotton Building, Liverpool L3 2ET

T: 0151 231 4498 | E: [k.a.critchley@ljmu.ac.uk](mailto:k.a.critchley@ljmu.ac.uk) | W: [www.tiig.info](http://www.tiig.info) and [www.cph.org.uk](http://www.cph.org.uk) | Twitter: [www.twitter.com/tiig\\_cph](https://twitter.com/tiig_cph)

<sup>5</sup> Please note that all numbers less than five have been suppressed (with \*\*\*) in line with patient confidentiality. If there is only one number less than five in a category then two numbers have been suppressed to prevent back calculations from totals.